



Progressing the first Radio-DARPin Therapeutic MP0712 (^{212}Pb x DLL3) for SCLC into the clinic

- New patient imaging and dosimetry data
- Update on Phase 1/2a study

Patrick Amstutz, CEO

Webcast call following TWC 2026 presentation

February 2, 2026



Disclaimer

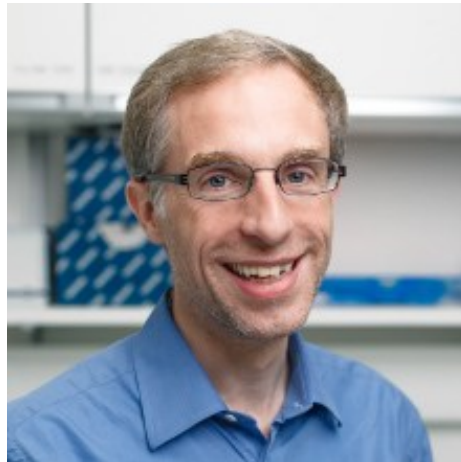
This presentation contains forward looking statements. Any statements contained in this presentation that do not describe historical facts may constitute forward-looking statements as that term is defined in the Private Securities Litigation Reform Act of 1995, as amended, including without limitation: implied and express statements regarding the clinical development of Molecular Partners' current or future product candidates; expectations regarding timing for reporting data from ongoing clinical trials or the initiation of future clinical trials; the potential therapeutic and clinical benefits of Molecular Partners' product candidates and its RDT and Switch-DARPin platforms; the selection and development of future programs; Molecular Partners' collaboration with Orano Med including the benefits and results that may be achieved through the collaboration; and Molecular Partners' expected business and financial outlook, including anticipated expenses and cash utilization for 2026. These statements may be identified by words such as "aim", "anticipate", "expect", "guidance", "intend", "outlook", "plan", "potential", "will" and similar expressions, and are based on Molecular Partners' current beliefs and expectations. These statements involve risks and uncertainties that could cause actual results to differ materially from those reflected in such statements. Some of the key factors that could cause actual results to differ from Molecular Partners' expectations include its plans to develop and potentially commercialize its product candidates; Molecular Partners' reliance on third party partners and collaborators over which it may not always have full control; Molecular Partners' ongoing and planned clinical trials and preclinical studies for its product candidates, including the timing of such trials and studies; the risk that the results of preclinical studies and clinical trials may not be predictive of future results in connection with future clinical trials; the timing of and Molecular Partners' ability to obtain and maintain regulatory approvals for its product candidates; the extent of clinical trials potentially required for Molecular Partners' product candidates; the clinical utility and ability to achieve market acceptance of Molecular Partners' product candidates; the potential that Molecular Partners' product candidates may exhibit serious adverse, undesirable or unacceptable side effects; the impact of any health pandemic, macroeconomic factors and other global events on Molecular Partners' preclinical studies, clinical trials or operations, or the operations of third parties on which it relies; Molecular Partners' plans and development of any new indications for its product candidates; Molecular Partners' commercialization, marketing and manufacturing capabilities and strategy; Molecular Partners' intellectual property position; Molecular Partners' ability to identify and in-license additional product candidates; unanticipated factors in addition to the foregoing that may cause Molecular Partners' actual results to differ from its financial and business projections and guidance; and other risks and uncertainties set forth in Molecular Partners' Annual Report on Form 20-F for the year ended December 31, 2024 and other filings Molecular Partners makes with the SEC from time to time. These documents are available on the Investors page of Molecular Partners' website at www.molecularpartners.com. In addition, this presentation contains information relating to interim data as of the relevant data cutoff date, results of which may differ from topline results that may be obtained in the future.

Any forward-looking statements speak only as of the date of this presentation and are based on information available to Molecular Partners as of the date of this release, and Molecular Partners assumes no obligation to, and does not intend to, update any forward-looking statements, whether as a result of new information, future events or otherwise.

Speakers



Patrick Amstutz
CEO



Michael T Stumpp
EVP Projects



Philippe Legenne
CMO



Ken Herrmann
Chair, Scientific Advisory Board

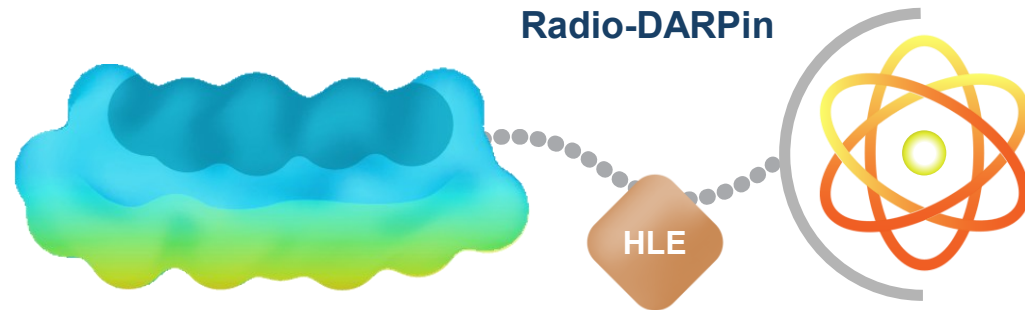
Making Alpha Therapies a Reality with DARPins and ^{212}Pb



MOLECULAR PARTNERS
PIONEERS of DARPIN THERAPEUTICS

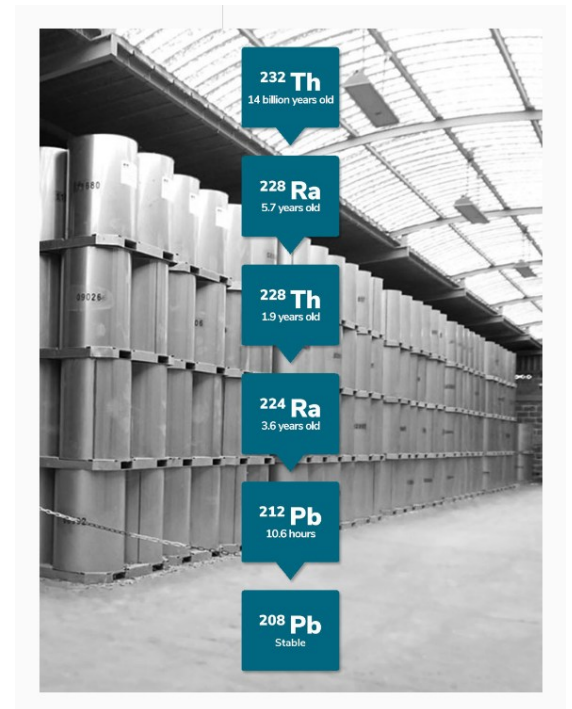
ORANO MED

PIONEERS of TARGETED ALPHA THERAPY

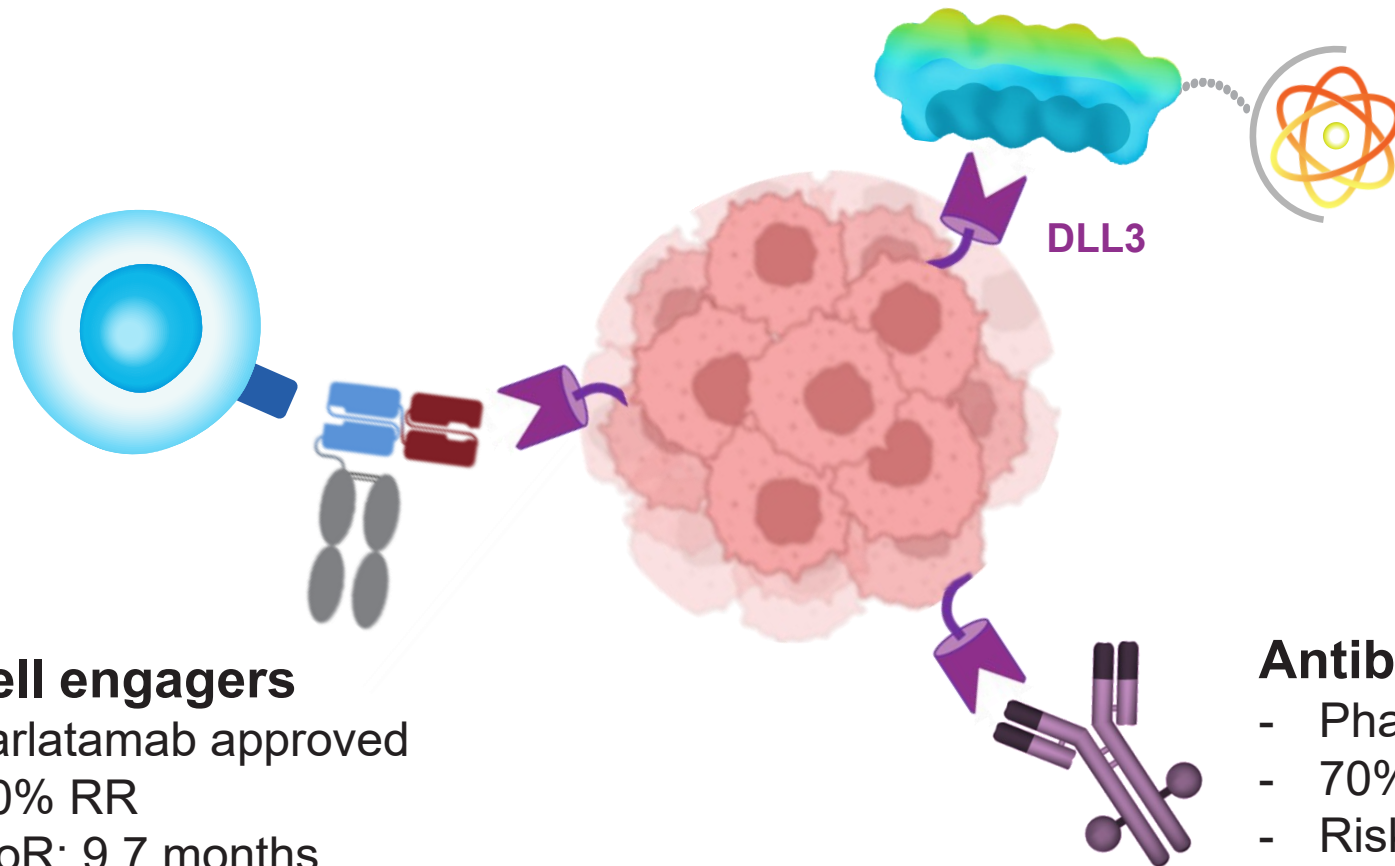


FULL VALUE CHAIN PARTNERSHIP:

- ✓ World class technologies & capabilities combined
- ✓ DARPins as ideal vectors for radiopharmaceuticals
- ✓ ^{212}Pb as potent therapeutic payload, proven clinical efficacy



MP0712 - Why DLL3 Targeted Radio Therapy for SCLC



Radio Therapy (MP0712)

- Phase 0/I
- SCLC highly radio sensitive
- Manageable side effects
- Combinable with other MoAs

T-Cell engagers

- Tarlatamab approved
- 40% RR
- DoR: 9.7 months
- Substantial side effects

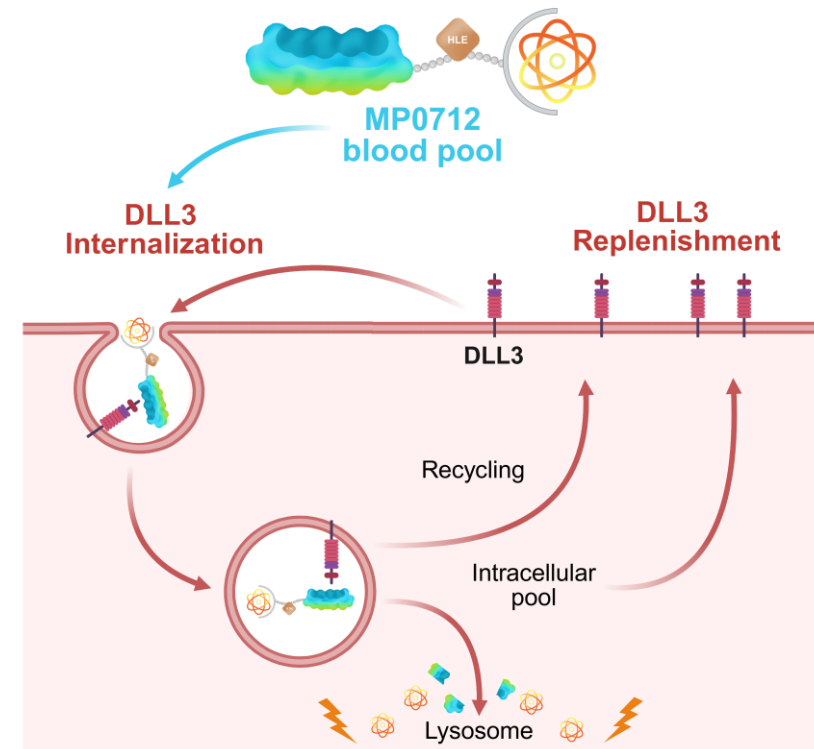
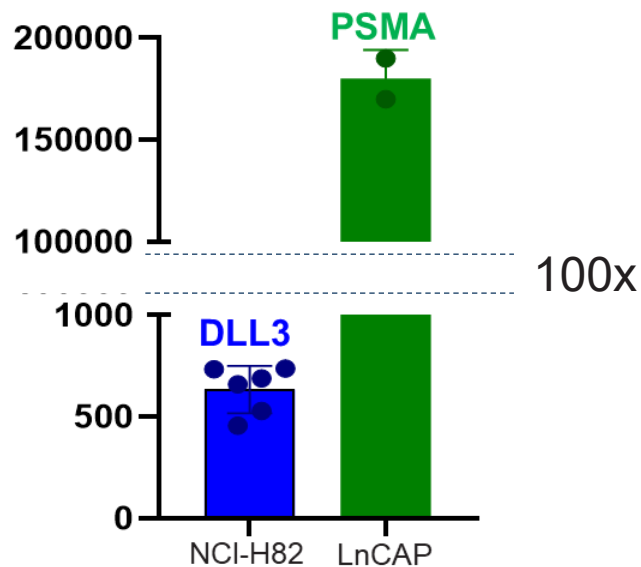
Antibody-Drug Conjugates

- Phase I/II
- 70% RR
- Risk of chemo-resistance
- Manageable side effects

MP0712: high tumor uptake via DLL3 replenishment

Very low DLL3 copy number on tumor cells

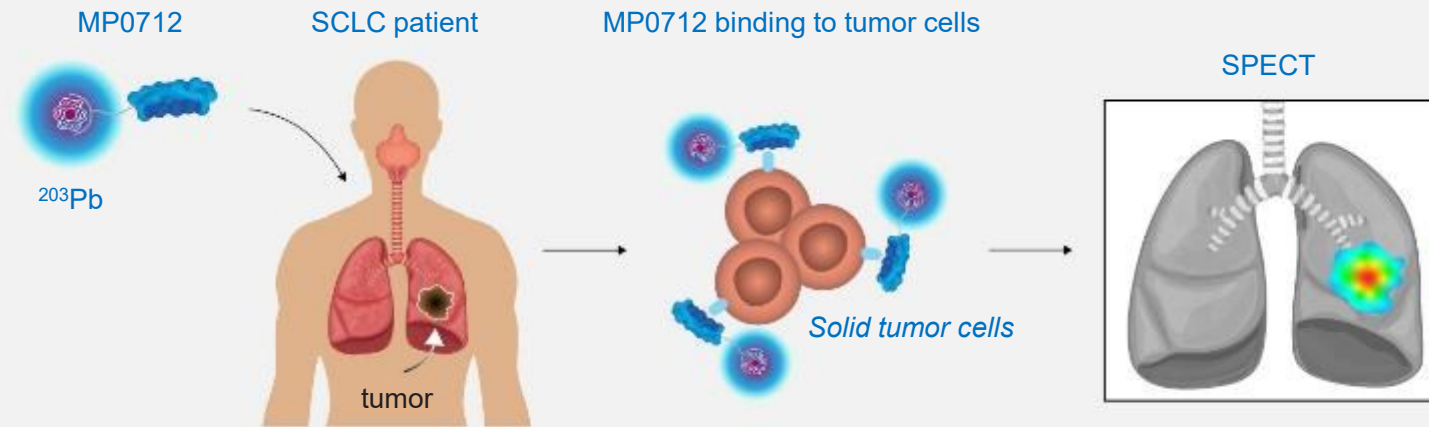
(DLL3: <1000; PSMA: >100'000 receptors/cell)



DARPin binding properties and extended systemic half-life exploit the rapid internalization & replenishment of DLL3 for high radioisotope accumulation in SCLC cells

MP0712 Development Pathway

1. Imaging

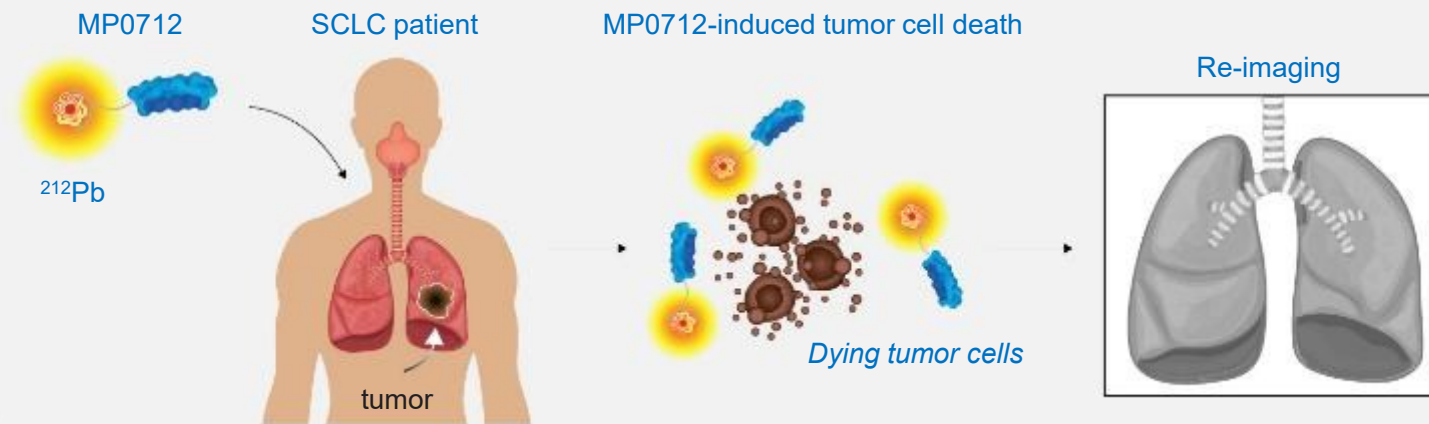


Named Patient Access Program:

- Imaging and dosimetry with ^{203}Pb
- Option for treatment with ^{212}Pb

*Request from NuMeRI, Pretoria, South Africa**

2. Treatment



Phase 1/2a Study:

- Safety of ^{212}Pb
- Efficacy signals
- Includes an imaging and dosimetry step with ^{203}Pb

SPECT/CT Imaging with ^{203}Pb -MP0712 in a Patient with Metastatic Small Cell Lung Cancer (mSCLC)

Patient characteristics

- 69-year-old male (smoker)
- Small cell neuroendocrine carcinoma of the lung
- Stage III at referral (mediastinal lesion)

Treatment history

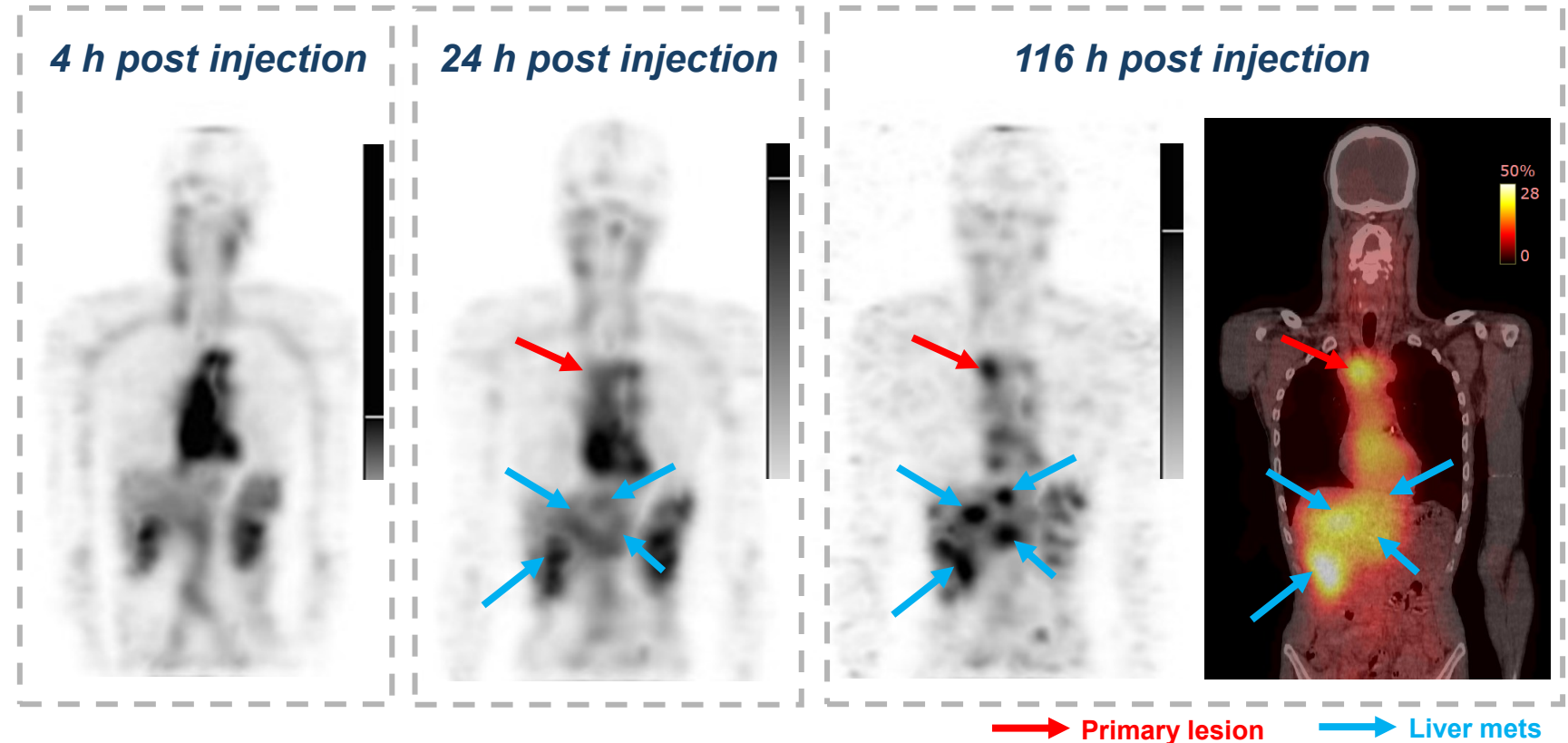
- Radio- & chemotherapy

Dosing

- 185 MBq of ^{203}Pb -MP0712

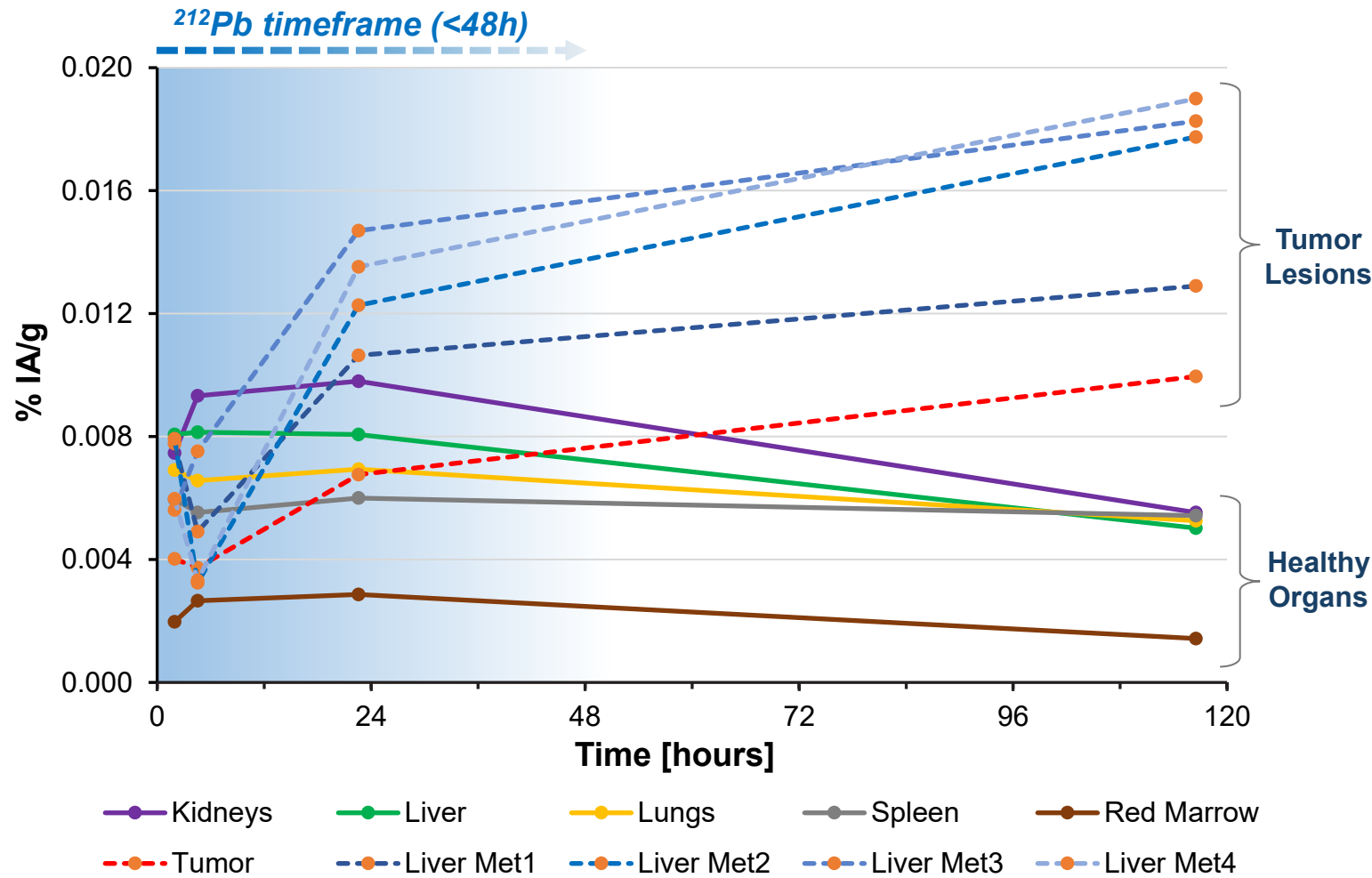
Result

- Stage IV by MP0712 - SPECT with 4 liver mets



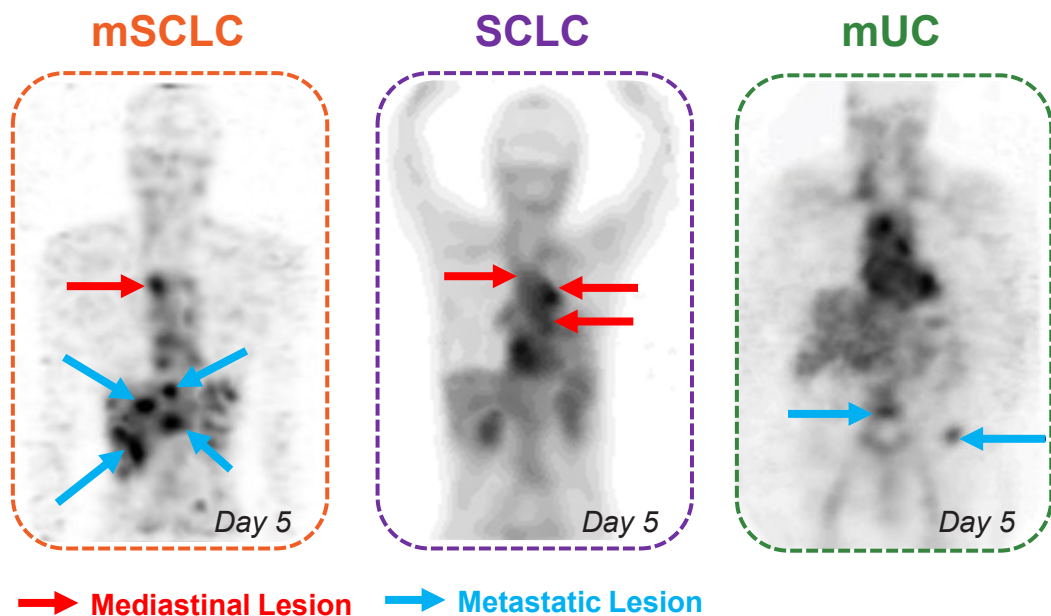
Initial high blood pool, followed by specific uptake in primary & metastatic lesions over time in line with MP0712 MoA

Biodistribution Profile of ^{203}Pb -MP0712 in mSCLC Patient

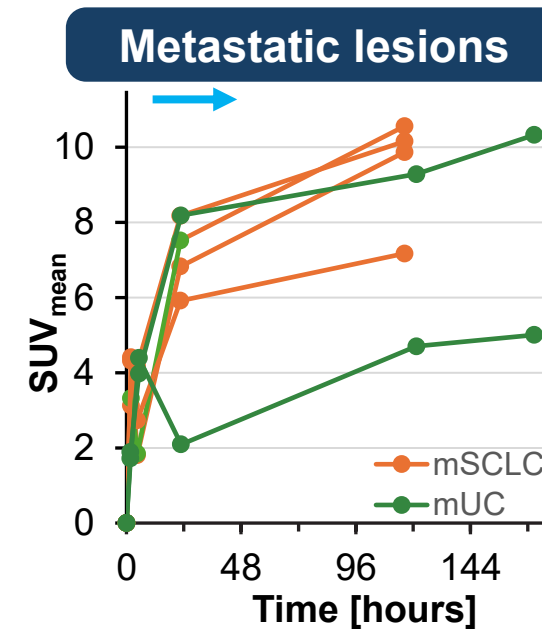
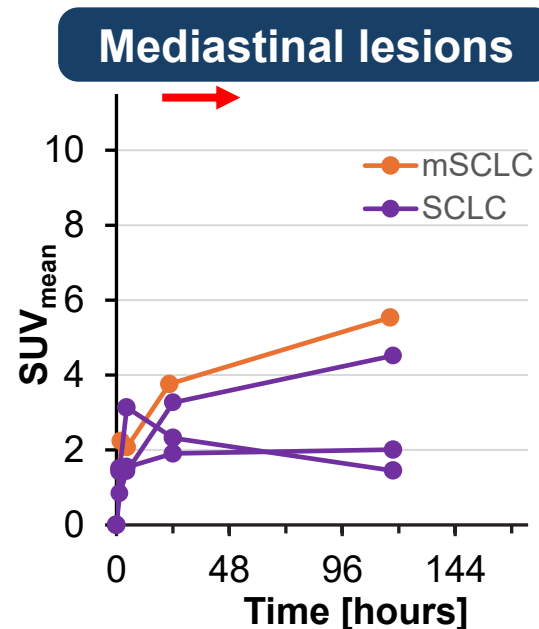


- **Continued tumor uptake** during imaging period (up to 116 h)
- **Higher uptake in liver metastases** as compared to primary lesion
- **Washout from healthy organs** visible from 24 h onwards
- Healthy organ profile consistent with profile observed in other patients

^{203}Pb -MP0712 Uptake in Tumor Lesions



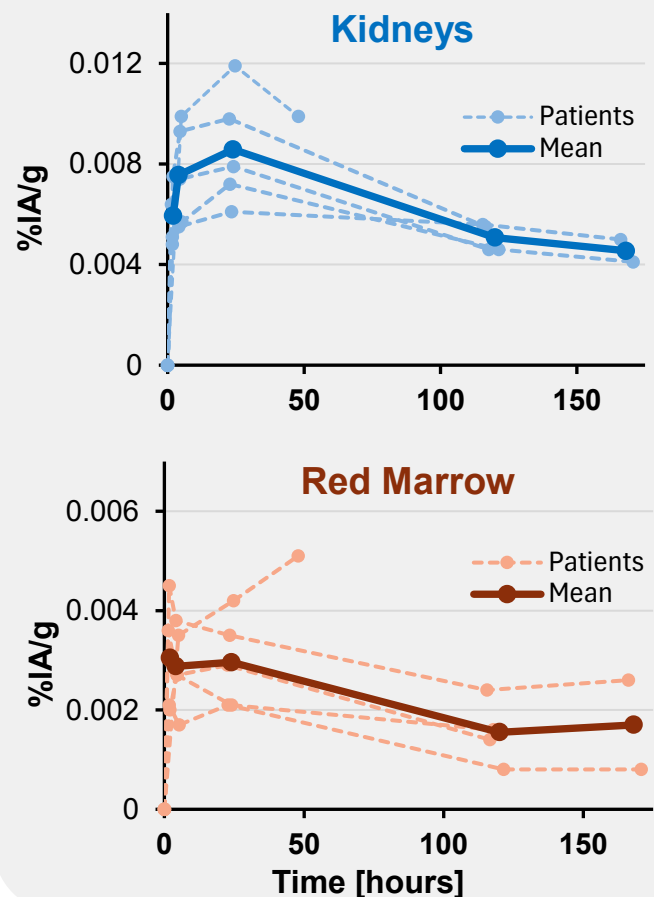
	SUV_{mean}	$\text{SUV}_{\text{max}}^*$
mSCLC	10.6 (Day 5)	67
SCLC	4.5 (Day 5)	88
mUC	10.3 (Day 7)	402



- **Progressive uptake** of MP0712 across different tumor types
 - ~80% of uptake reached at 24h
 - **Strong tumor retention** with continued uptake during imaging period (up to 7 days)
- **Preferential uptake in metastatic lesions**
 - **Ph1 study** in US expected to enroll **metastatic SCLC patients**

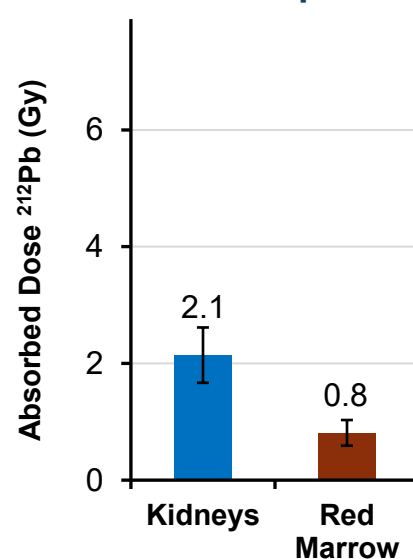
MP0712 Organ Dosimetry and Projection to Phase 1

^{203}Pb Time-Activity Curves

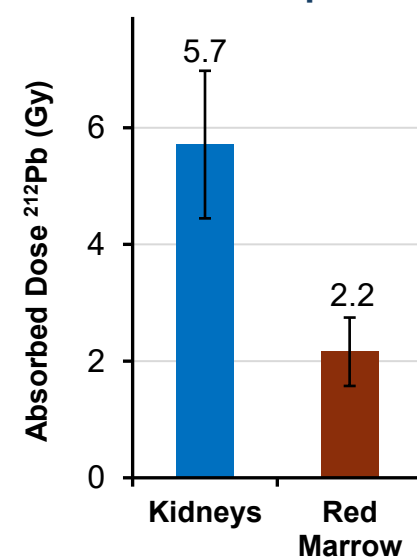


Dosimetry extrapolations suggest kidneys & red marrow as potential dose-limiting organs for ^{212}Pb -MP0712

1x 75 MBq ^{212}Pb



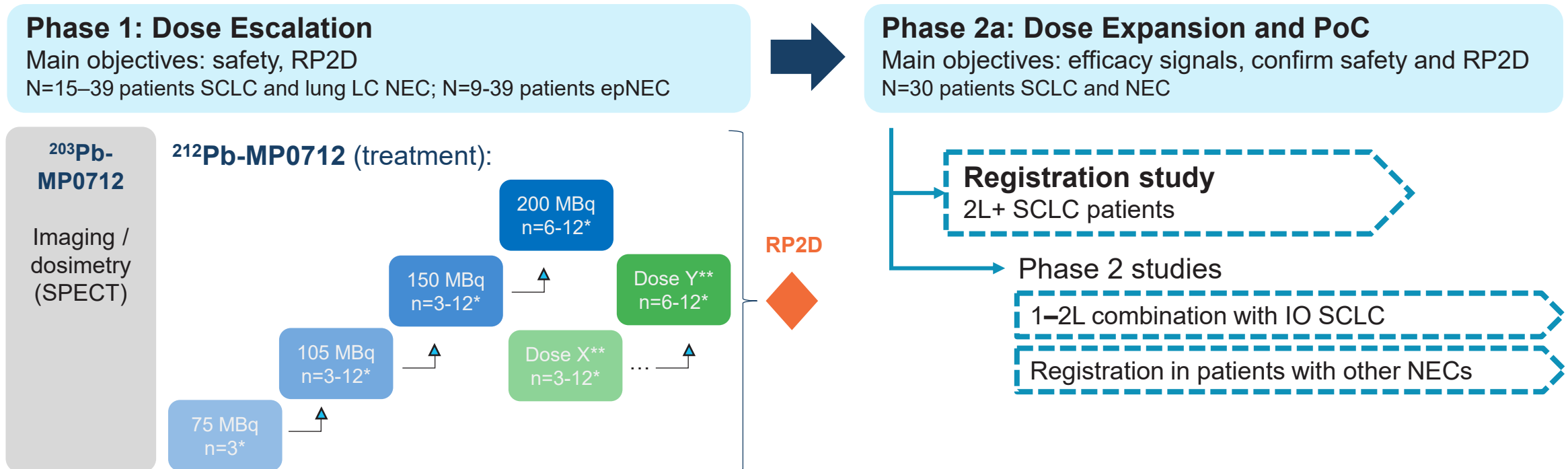
1x 200 MBq ^{212}Pb



- At Phase 1 starting dose (75 MBq) and at max. anticipated single dose (200 MBq) all healthy organs are within EBRT limits
- Monitor hematologic recovery to guide repeated dosing strategies

MP0712 Phase 1/2a Study for SCLC and other NECs

- First-in-Human, US multicenter, Phase 1/2a study of MP0712 monotherapy (NCT07278479)
- Patients with small cell lung cancer (SCLC) and other neuro-endocrine cancers (NECs)
 - Every patient will be imaged (^{203}Pb) before treatment (^{212}Pb)
 - Patient pre-selection on DLL3 expression: not planned for SCLC and LC NEC of lung, foreseen for epNEC



* Evaluable patients (Bayesian Logistic Regression Model guided dose escalation)

Clinical Perspective on Data Presented

➤ All boxes checked:

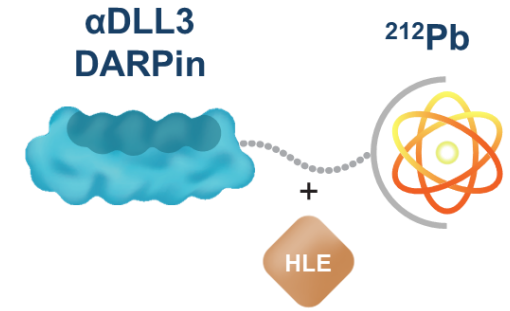
- First **favorable in human biodistribution** represents an important milestone
 - ^{203}Pb -MP0712 SPECT images indicate **strong tumor uptake** visible until 120-168h
 - Majority of tumor lesions show increased uptake over time, whereas **normal organ uptake seems to wash out**
 - Visual and dosimetric results clear the bar of first in human therapy trial with **highest intended starting dose within EBRT limits**
- Next: **see how the therapeutic (^{212}Pb -MP0712) performs** in patients – now clinical parameters are key



Prof. Ken Herrmann, M.D.

Chair, Department of Nuclear Medicine,
University Hospital Essen, Germany

MP0712 Conclusions



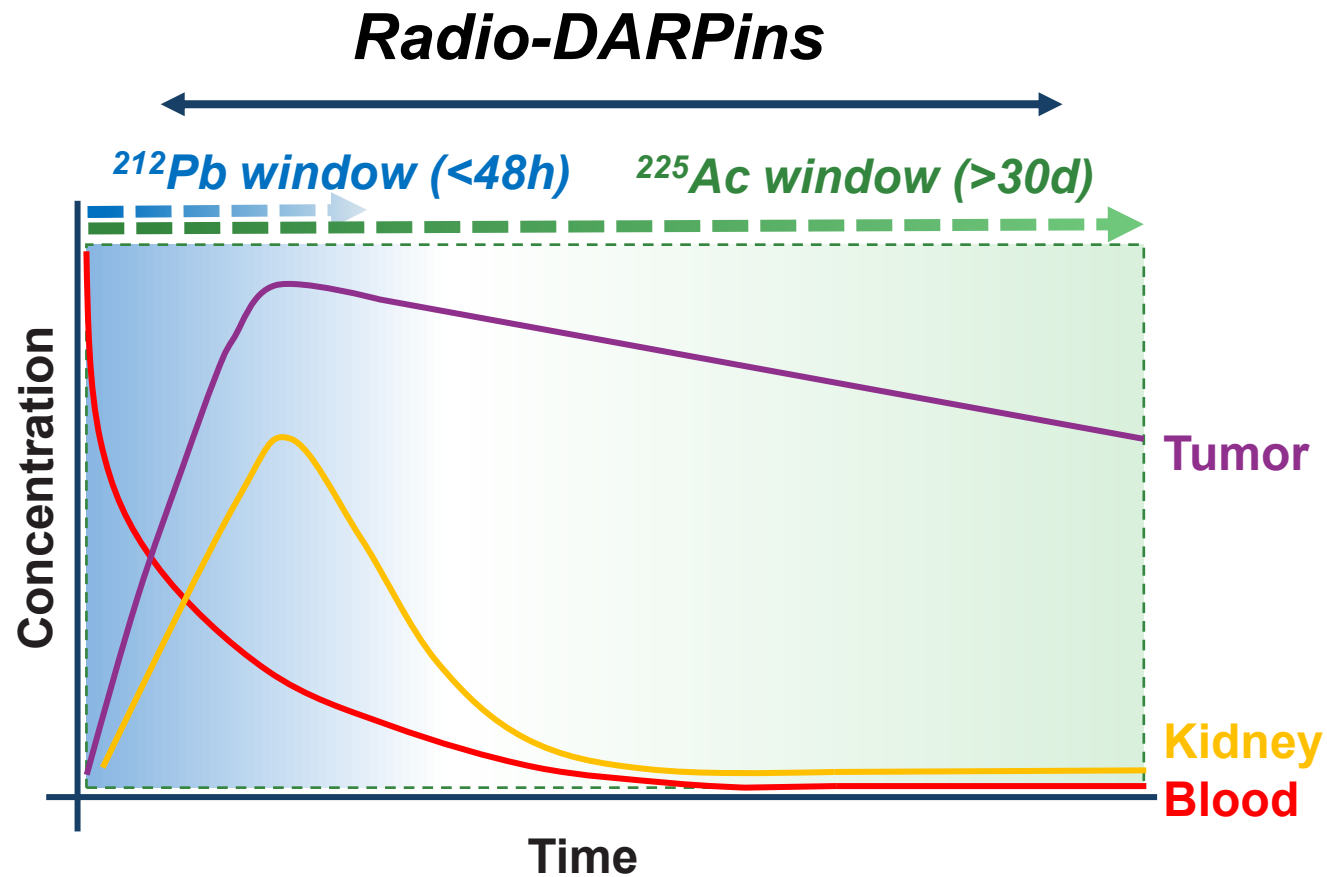
Conclusion

- **Optimized tumor uptake and retention**, by leveraging DLL3 replenishment/internalization
- **Favorable biodistribution and dosimetry on healthy organs**, focus on blood recovery
- **Support MP0712 Phase 1 study design** starting at meaningful dose for DLL3+ indications

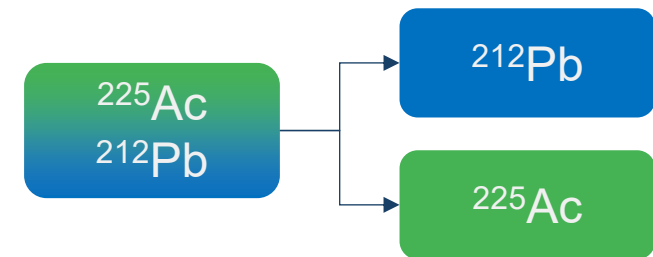
Outlook

- **MP0712 Phase 1/2a study open** in the US, first patient dosing imminent
- Initial **safety data anticipated in H1 2026**, initial **activity in H2 2026**

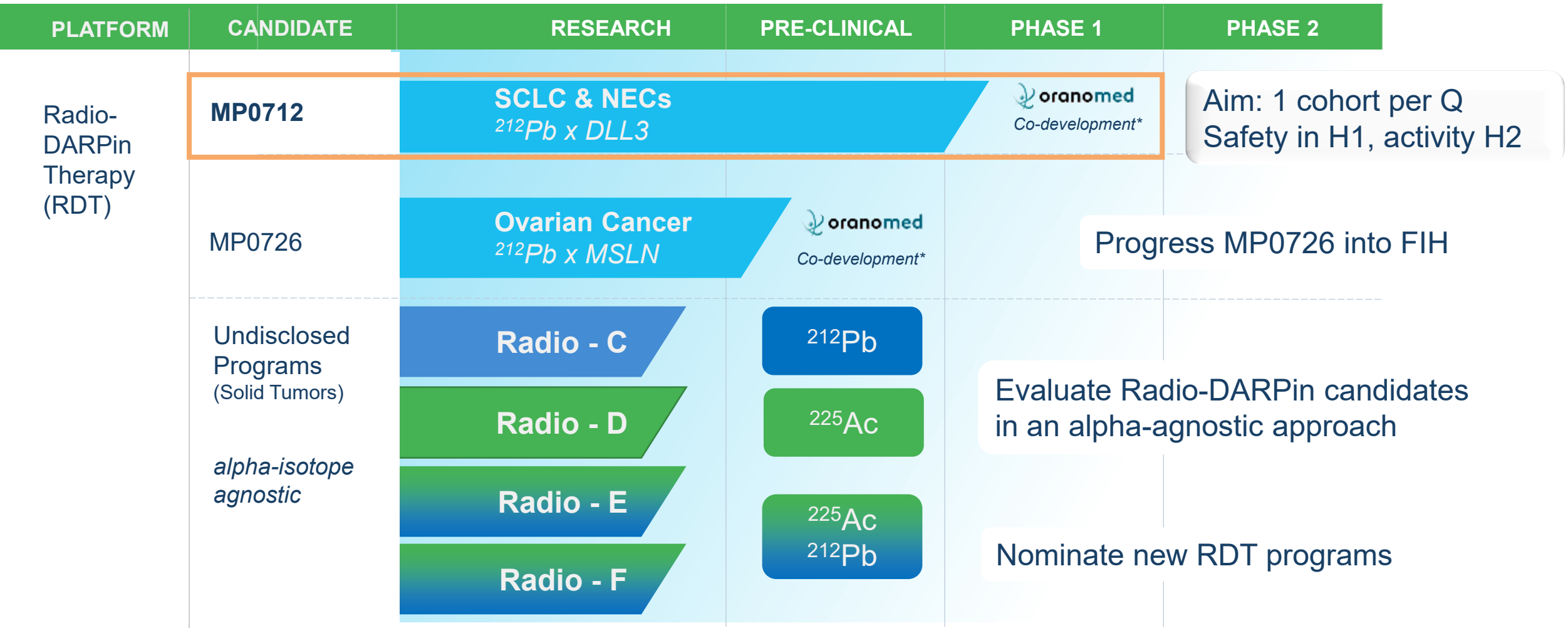
Long tumor retention make DARPin alpha-agnostic



- DARPin profile can work for both ^{212}Pb and/or ^{225}Ac
- Opportunity to evaluate both isotopes in parallel and decide on the best isotope with data

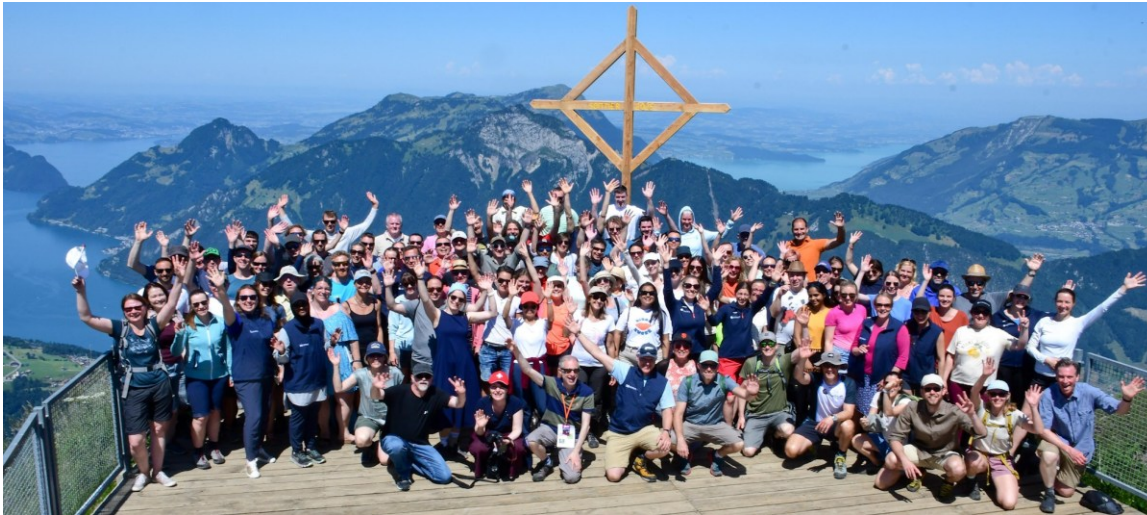


Radio DARPin Pipeline – News Flow in 2026



Acknowledgments

Team at Molecular Partners AG



NuMeRI Team

Mike Sathekge
Joseph Kabunda
Honest Ndlovu



Orano Med Team



Julien Torgue
Amal Saidi
Aaron Schatzmann
Tania Stallons
Amy Wong
Federico Rojas
Amanda Reyes
Jessica Johnson
Rob Chastain
Haley Sprague
Volker Wagner &
clinical team

Patients and their Families



*Twenty Years of Pioneering
DARPin Therapeutics for Patients*

Thank you!

